



ARCHITEXTURAL™

Surface. Designed.



3M DI-NOC FILMS

TREND LINE





3M DI-NOC ARCHITECTURAL FINISHES

3M DI-NOC Architectural Finishes are self-adhesive materials that are designed for interior and exterior decoration and refurbishment projects.

Every surface becomes a potential project to rehabilitate and redesign the space. Endless application opportunities are possible on ceilings, walls, facades, doors, columns, bars, counters, cupboards, lifts, partitions, department stores, offices, restaurants, lobbies, bathrooms, hospitals, banks and conference rooms.

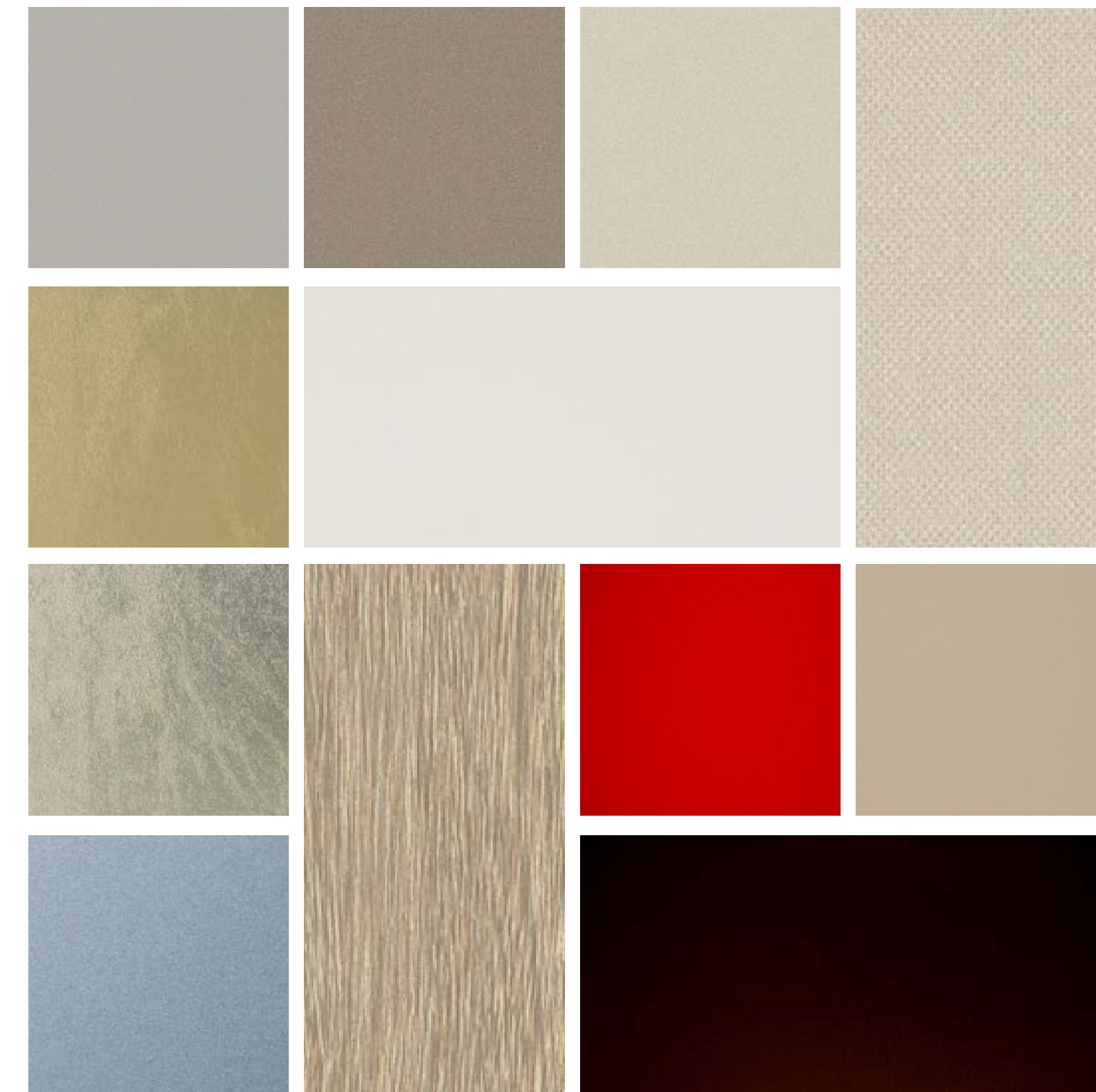
TREND LINE

Trend Line incorporates the most popular 80 patterns, including metallics, fabrics, wood, leather, carbon and single colour finishes. These are all stocked locally, and available to order by the metre, to be able to supply your projects quickly and easily.

Application of DI-NOC self-adhesive products can be done in situ, meaning modifications to surface designs in intricate environments can be done with minimal disruption.

Benefits

- Cost savings over traditional remodelling costs
- Faster to install with minimal preparation, noise and mess
- Easier to repair damaged film section
- Fire resistant and IMO certified for peace of mind



ABSTRACT EARTH

AE-1719 NEW

ADVANCED METALLIC

AM-1697 ! NEW

AM-1699 ! NEW

AM-1702 ! NEW

AM-1721 ! NEW

CARBON

CA-419

CA-420 ⚙

CA-421 ⚙

EFFECT

ET-1772 NEW

ET-1775 NEW

WEAVE

FE-1732 ! NEW

FE-805 !

FE-813 !

FINE WOOD

FW-1021 📷 ⚙

FW-1022 📷 ⚙

FW-1122 📷 ⚙ ☁

FINE WOOD

FW-1127 ⚙ 📷

FW-1135 ⚙ 📷

FW-1756 NEW

FW-1757 NEW

FW-1768 NEW

FW-236 ⚙ ⚠

FW-327 ⚙

FW-330 ⚙

FINE WOOD

FW-337 ⚙ ⚠

FW-650 ⚙

FW-651 ⚙ ⚠

FW-7001 ⚠

FW-788

FW-888 ⚙

LEATHER

LE-1105

LE-1109 ⚙

Suitable for external applications

Suitable for external applications but not recommended for application to PVC coated materials

Not recommended for use on compound curves

Not recommended for butt joint applications

NEW

One of the new 240 patterns introduced in 2014

Horizontal grain direction

Pattern is large scale
View full pattern at 3M.com/AMD

Available in EX series

Available in both horizontal and vertical grain pattern options

Also available as a non-PVC version (E-Series)
NB: E-Series films are non-stock items and are not suitable for application to compound curves

Suitable for external applications

Suitable for external applications but not recommended for application to PVC coated materials

Not recommended for use on compound curves

Not recommended for butt joint applications

NEW

One of the new 240 patterns introduced in 2014

Horizontal grain direction

Pattern is large scale
View full pattern at 3M.com/AMD

Available in EX series

Available in both horizontal and vertical grain pattern options

Also available as a non-PVC version (E-Series)
NB: E-Series films are non-stock items and are not suitable for application to compound curves

SINGLE COLOUR



PS-503 PS-504 PS-910 PS-949 PS-950 PS-952 PS-954 PS-955

SINGLE COLOUR



PS-959 PS-971 PS-983 PS-992

WHITEBOARD



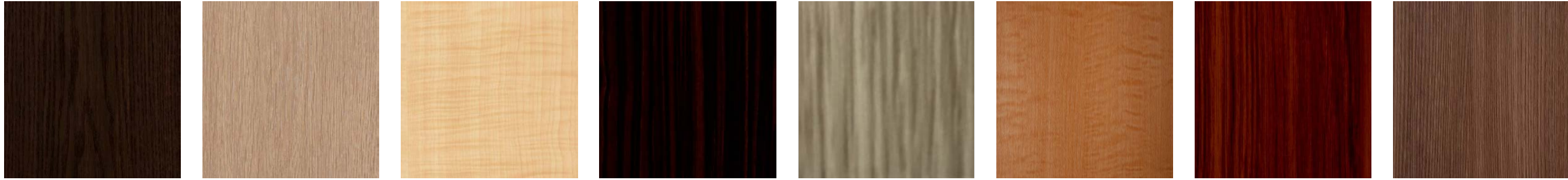
PWF-500 WH-111

WOOD GRAIN



WG-1141 WG-1144

WOOD GRAIN



WG-156 WG-166 WG-478 WG-664 WG-696 WG-832 WG-943 WG-947



“
CREATIVE
ALTERNATIVES
TO ANY
MATERIAL
”

Beverley Race Course, bar and hospitality area refurbishment. The brief required a finish that would complement the features of the overall design, providing a high-end look without a high-end cost.

3M's DI-NOC self-adhesive laminate film was selected for the refurbishment. There were 27 separate elements to the project, the largest of which were the back wall panels. In all around 500 panels were produced, all of which required precise and accurate finish to the corners.

“
UNLIMITED
INTERIOR
DESIGN
POTENTIAL
”



BEFORE



AFTER

Providing over 900 patterns in a wide variety of shades, surface textures and finishes, DI-NOC offers unlimited flexibility for the creation of natural or hi-tech effects for both modern and traditional environments.

“
MINIMAL
DISRUPTION
FOR
APPLICATION
”



EXAMPLES OF REFURBISHMENT VERSUS NEW PROJECT COST:

Hotel Lift

- Refurbishment = £1,300,
new £5,200
- 75% saving

Hotel Bar

- Refurbishment = £2,800,
new = £18,000
- 85% saving

Office Reception

- Refurbishment = £3,300,
new = £19,000
- 83% saving

Bar Area

- Refurbishment = £15,800,
new = £120,000
- 87% saving

